



Resilio Connect: File Sync for NetApp

Finding the right file replication solution for your customers can be tricky, especially when requirements include legacy systems or third-party hardware, hybrid on-prem/cloud architectures, or syncing across regions.

Resilio Connect, a highly-scalable and resilient peer-to-peer data replication solution for enterprises, is gaining popularity with NetApp engineers and customers worldwide as a simple yet powerful solution to sync files at wire-speed across large, multi-platform global deployments.

[Watch Video](#)

Popular Use Cases:



[Server Sync](#)

Concurrently replicate up to 200 million files (per agent) of any size and type, across any number of servers, from any vendor.



[Active-Active VDI Profile Sync](#)

Enable active-active HA across any number of locations and boost site-to-site performance by 3x, plus enable rapid user login and reduce time-to-desktop by 2-5x.



[Disaster Recovery](#)

Reduce RPO and RTO for hot site disaster recovery (DR). Supports a variety of configurations, any type of connectivity, any storage, and any data center location.



[Remote Work](#)

Enable teams to work remote and stay in sync. Resilio's Transparent Selective Sync provides on-demand file access, local caching, and fast downloads.

Notable Customers



Resilio + NetApp enables:

- **Real-time replication** between any NetApp platforms
- **Cross-region replication (CRR)** to any number of regions (even unpaired regions)
- **Replication** across any availability zone (CZR)
- **Active-active hybrid** multi-cloud HA
- **Active-active VDI** with NetApp and Azure
- **Real-time sync** to complement SnapMirror
- **Rapid migration** from any existing platform

Resilio at a Glance

- ✓ **Real-time low-latency N-way file sync**
Scale-out P2P mesh architecture delivers wire-speed omni-directional file replication. Instead of performance degradation at scale, more servers equal better performance and unprecedented resilience.
- ✓ **Central management and control**
Single pane of glass; RBAC; AD integration. Control file access, analyze performance metrics, automate, script, or schedule jobs, and optimize bandwidth usage. Gain deep insight with extensive instrumentation and dashboards. Send detailed logs to Splunk, LogRhythm, Loggly, and others.
- ✓ **Enterprise-grade security and remote access**
100% private solution with end-to-end encryption, mutual authentication and authorization of clients and the management console. Agents sync files directly between each other - no VPN or SMB needed (still supported).
- ✓ **Intelligent WAN acceleration**
Detects bandwidth and network congestion states to automatically optimize for reliable and efficient bulk data transfer over any bandwidth and network condition - from ultra-fast LANs (100Gbps+) to long distance, high latency WANs, to slow and unreliable mobile and satellite networks (VSAT, LTE, WiFi).



[Register an Opportunity or Become a Partner](#)

Or contact Joshua Sargent,
VP of Partnerships @ Resilio: josh@resilio.com



NetApp + Resilio in Depth



Cross-platform replication

Real-time bi-directional sync between any combination of NetApp platforms and/or 3rd party platforms.

- ANF, CVO, FAS, AFF, E-Series, SolidFire, FSx-ONTAP, Google CVS, ONTAP Select, StorageGRID, etc.
- Offers multi-cloud replication for Azure Disks/Files/Blobs, ANF, AWS EBS/FSx/EFS/S3, Google Persistent Disks/Filestore/Cloud Storage, IBM Block/File/Object storage, and many other cloud platforms



Cross-region and cross-zone replication (CRR + CZR)

Simultaneously replicate data from an ANF volume in one region to multiple volumes across multiple regions and/or availability zones.



Active-Active hybrid and multi-cloud HA

Maintain high availability with full read/write access, even when replicating across public-private hybrid cloud architectures or multiple cloud services. Sync between any number of locations.



Active-Active VDI profile sync

Enable active-active HA profile sync across multiple sites without compromising performance. Boost site-to-site performance by 3x—and reduce time-to-desktop by 2-5x.



Mission-critical real-time sync

Complement or replace SnapMirror with Resilio for real-time replication, active-active copies, bi-directional or omni-directional sync, many locations, or multi-platform support.



Vendor-agnostic

Quickly and seamlessly integrate NetApp solutions into legacy infrastructure, overcoming barriers to entry and reducing customer anxiety. Or help customers easily migrate from third-party hardware to NetApp. Acquire files and metadata from storage platforms such as Nasuni, Ctera, Panzura, and Dell EMC Isilon.



Remote branch caching

Provide remote/branch office caching of hot files on demand, while providing much greater architectural flexibility and higher performance than competing solutions from Nasuni, Panzura, etc...all without vendor lock-in.



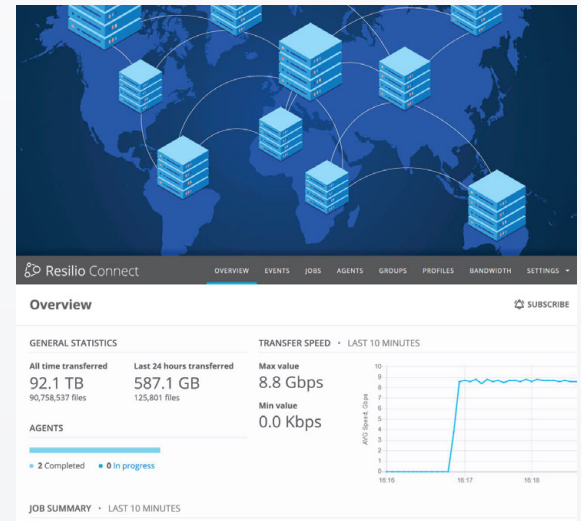
Omni-directional Azure NetApp Files (ANF) replication

Enable bidirectional, one-to-many (fan-out), many-to-one (fan-in), and N-way (many-to-many) replication to easily handle the most unique customer requirements.

By The Numbers

Scaleable for the most demanding environments

- One-to-one, one-to-many, many-to-one, and full mesh N-way sync
- Up to 30,000 servers per instance
- 200,000,000+ files per job
- Multi-terabyte file sizes with efficient fail-safe delivery



Recent NetApp Customer Deployments

[Extreme Engineering and Construction](#)
[Fortune 500 Company]

[Technology leader needed improved DR](#)

Benefits

Scalable
Fast
Secure
Efficient
Flexible
Highly-available



[Register an Opportunity or Become a Partner](#)

Or contact Joshua Sargent,
VP of Partnerships @ Resilio: josh@resilio.com

